

Adventskalender

Weihnachtswichtel Nr. 2

DAS WIRD GEBRAUCHT:

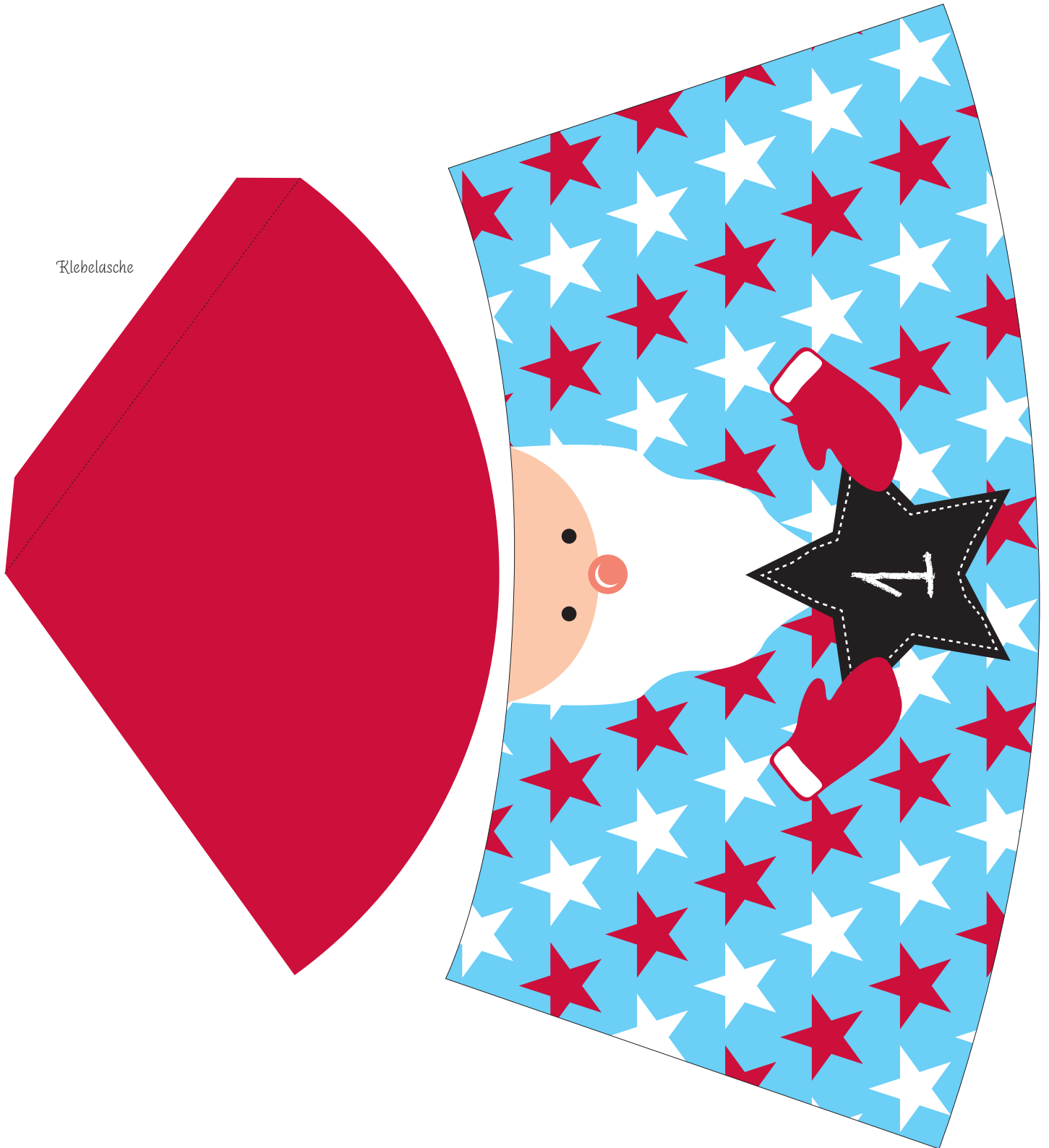
- ★ 24 Bögen DIN-A4-Papier, etwas dickere Qualität
z. B. 160 g/qm (zur Not gehen aber auch 80 oder 100 g/qm)
- ★ 24 Pappbecher (0,2 Liter)
(gibt's z. B. bei Kaufland)
- ★ Pritt-Stift oder ähnlicher Kleber
- ★ Schere
- ★ 24 kleine Geschenke (verpackt oder unverpackt)

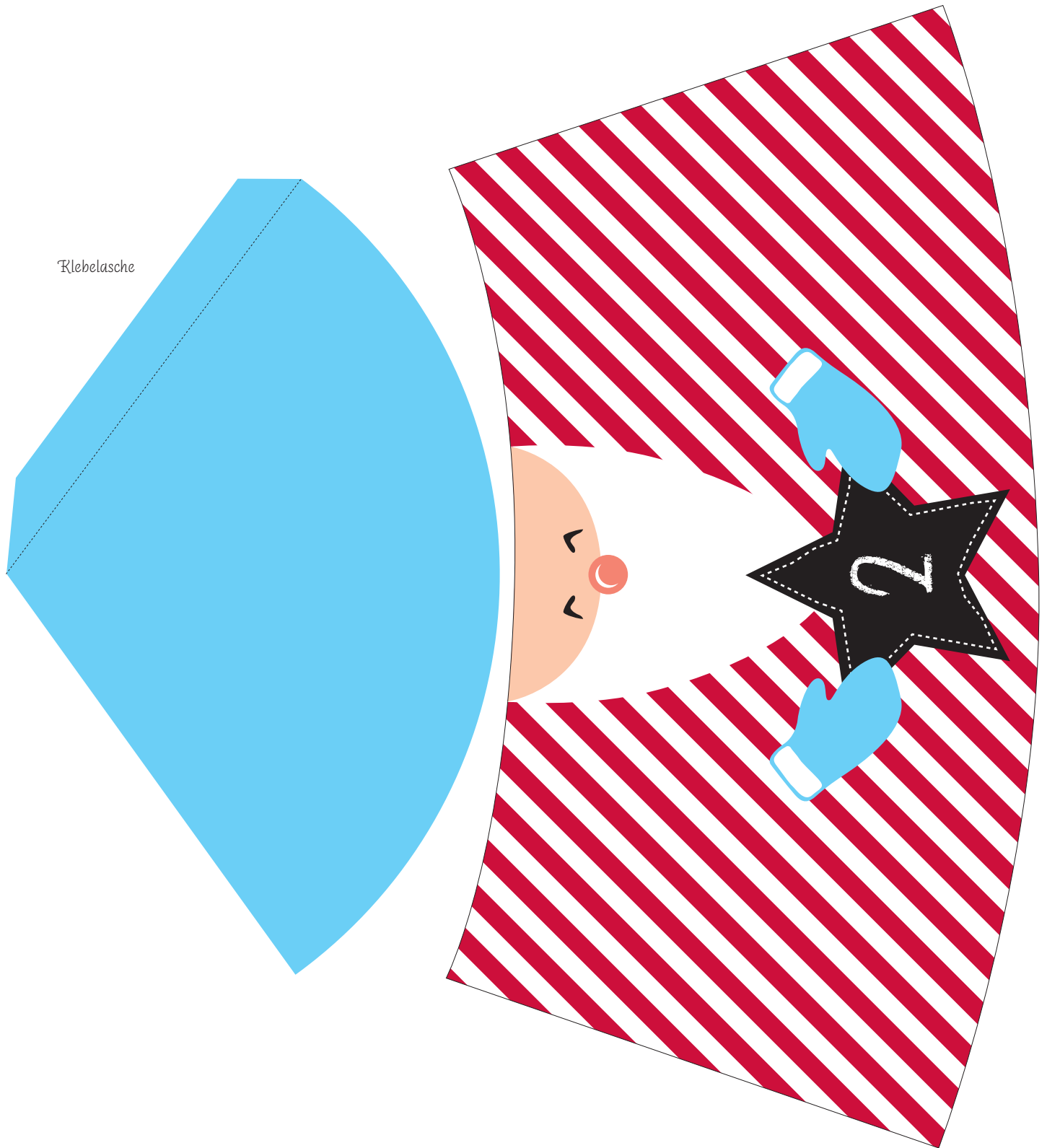


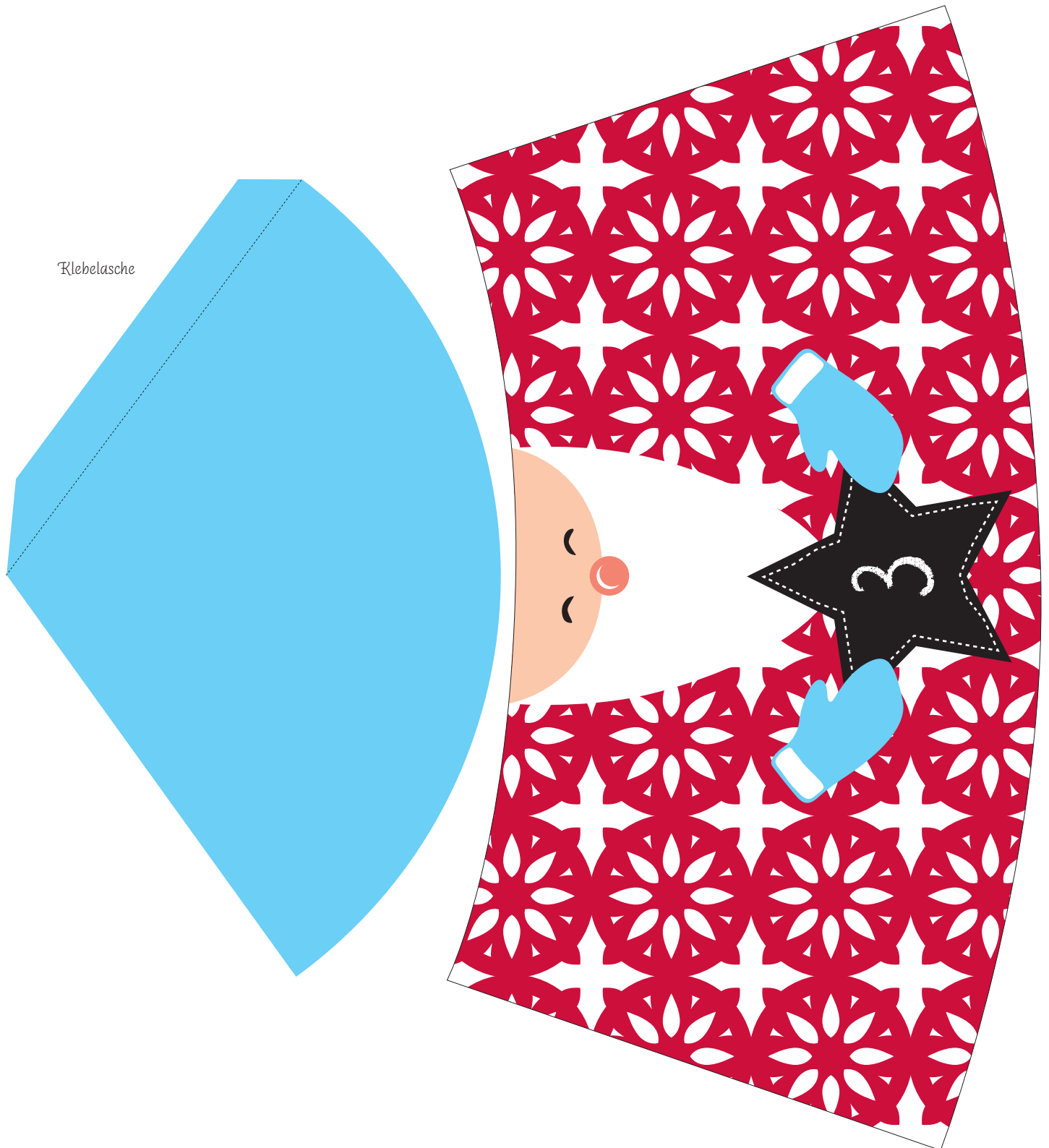
DAS WIRD'S GEMACHT:

1. Zuerst die Wichtel-Vorlagen ausdrucken, dann alle ausschneiden.
2. Die unteren Teile (Gesicht + Mantel) um die Pappbecher kleben. Dabei reicht es aus, die hinteren Enden gut festzukleben.
3. Dann die Hütchen mit Hilfe der Klebelasche kleben und jeweils auf die Becher zu setzen.
(Evtl. innen mit etwas Tesa fixieren, wenn nötig.)
4. Unter die einzelnen Wichtel die Geschenke stecken, fertig!

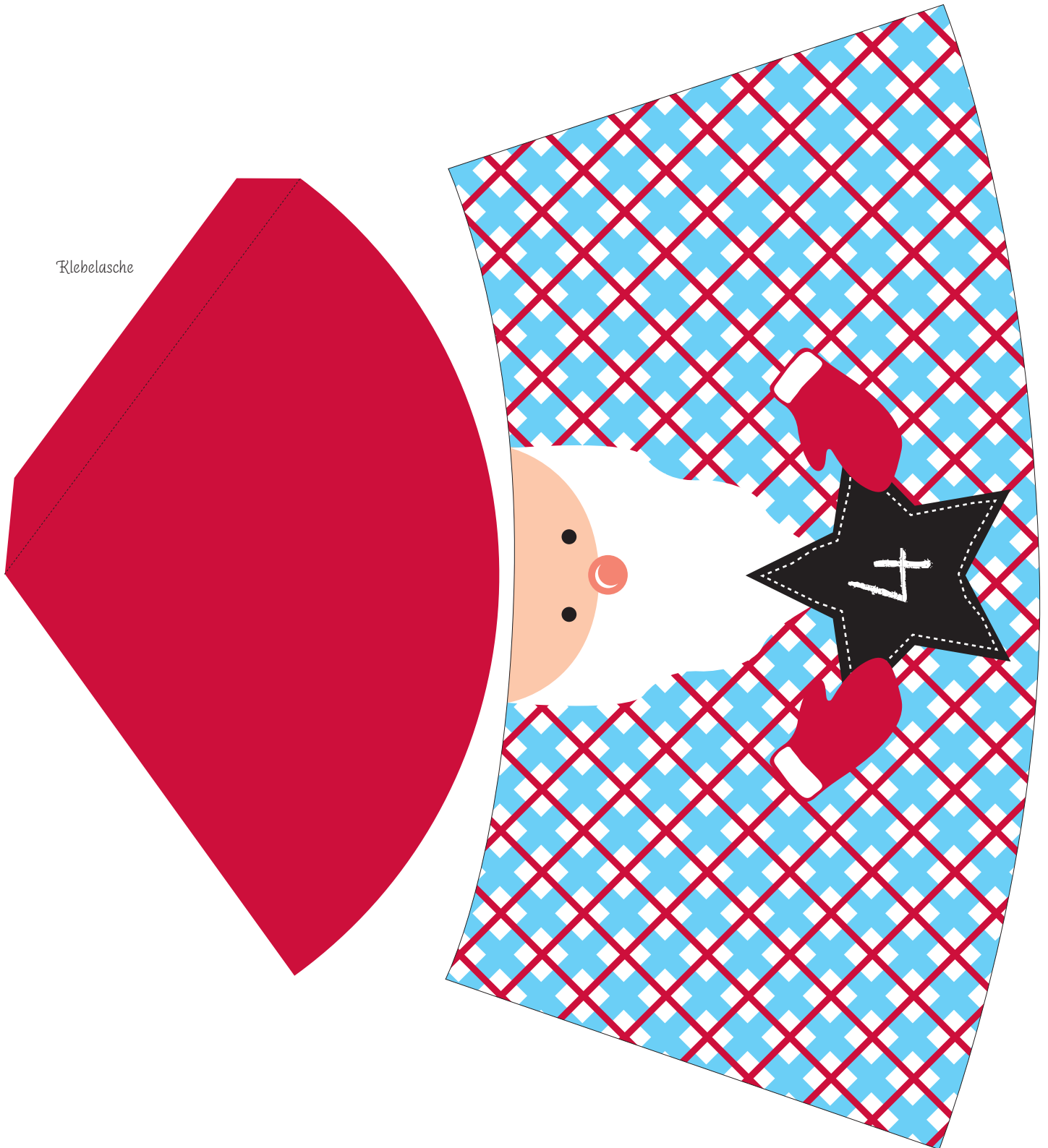
Klebelasche

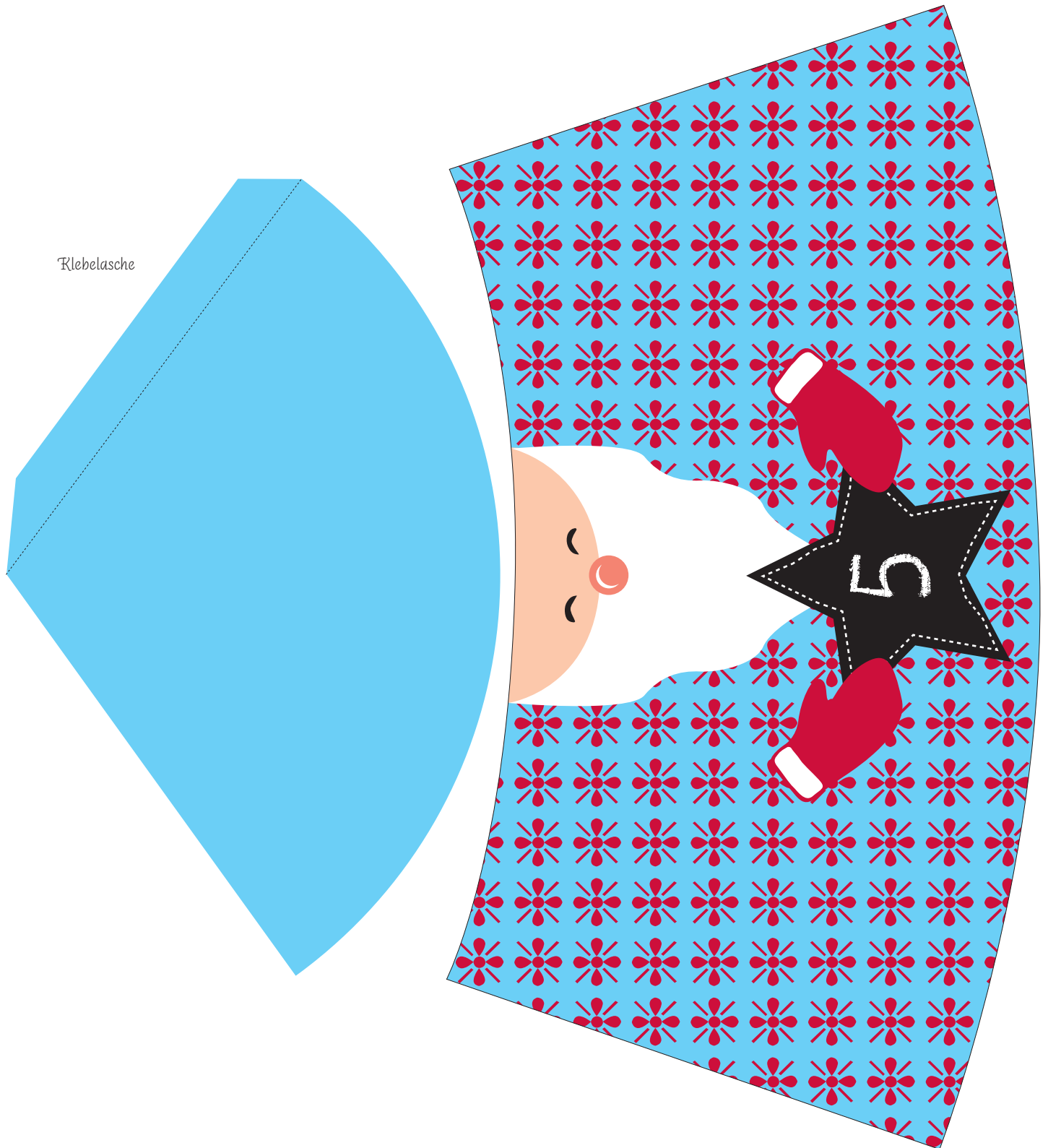


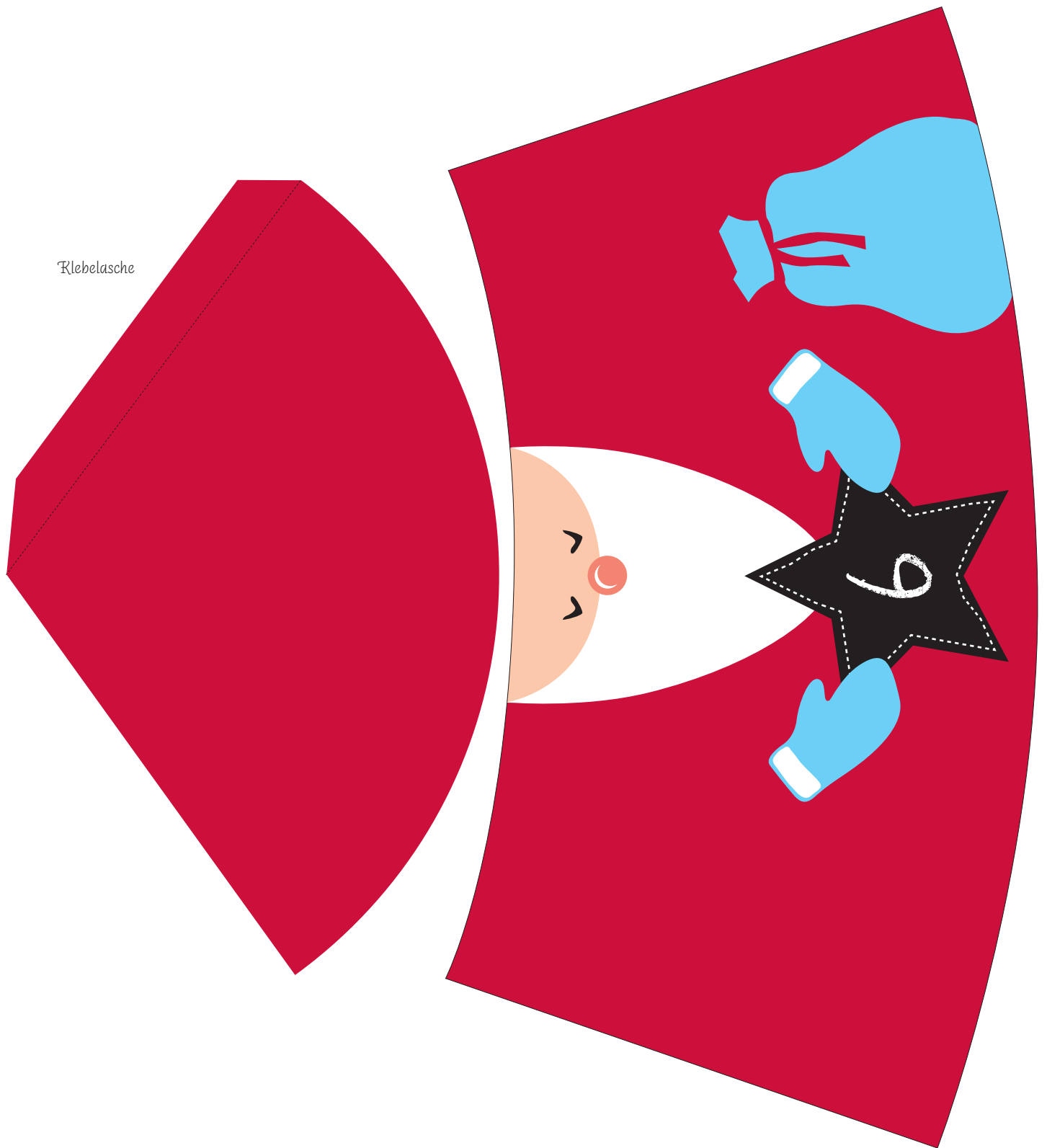




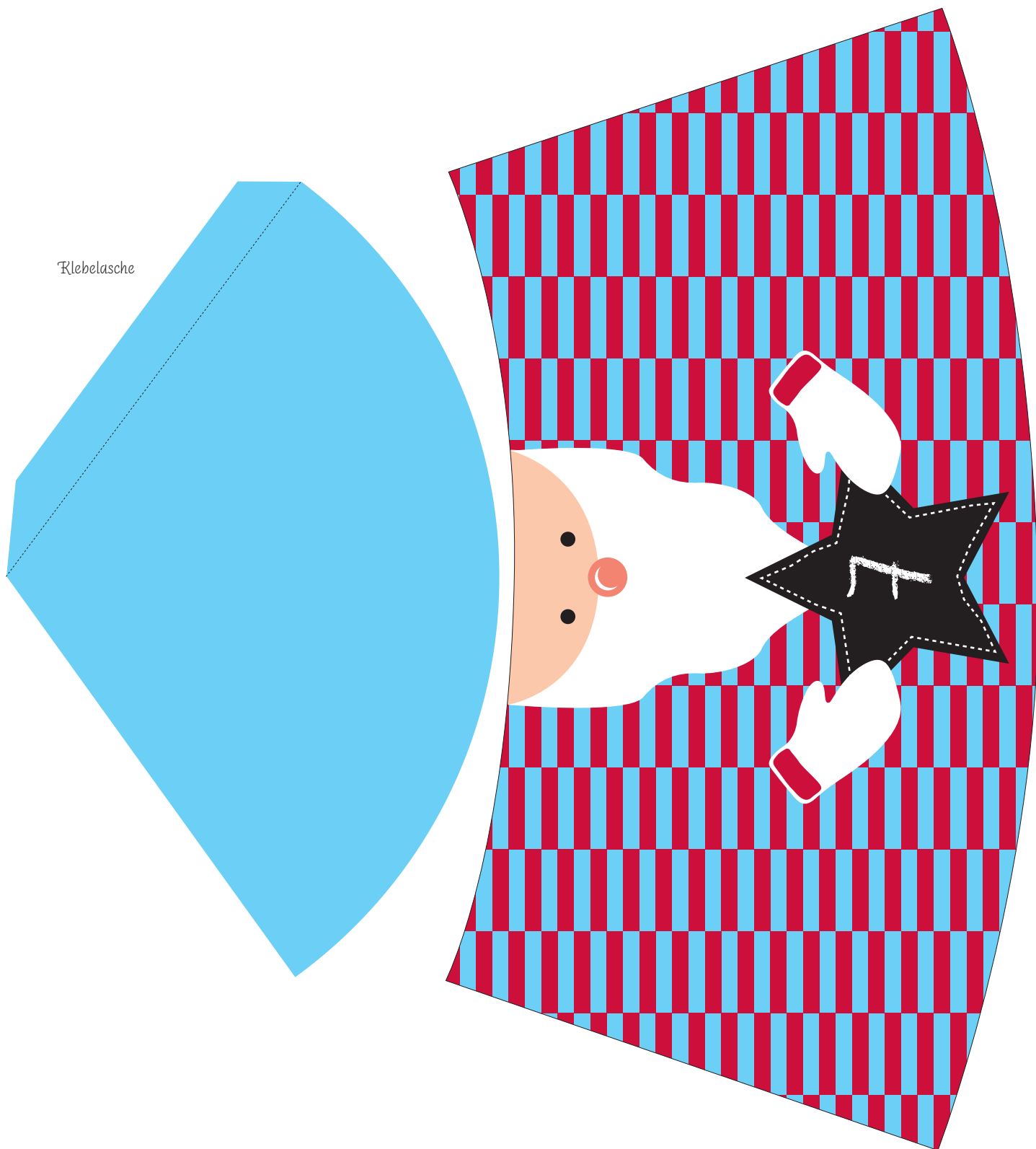
Klebelasche

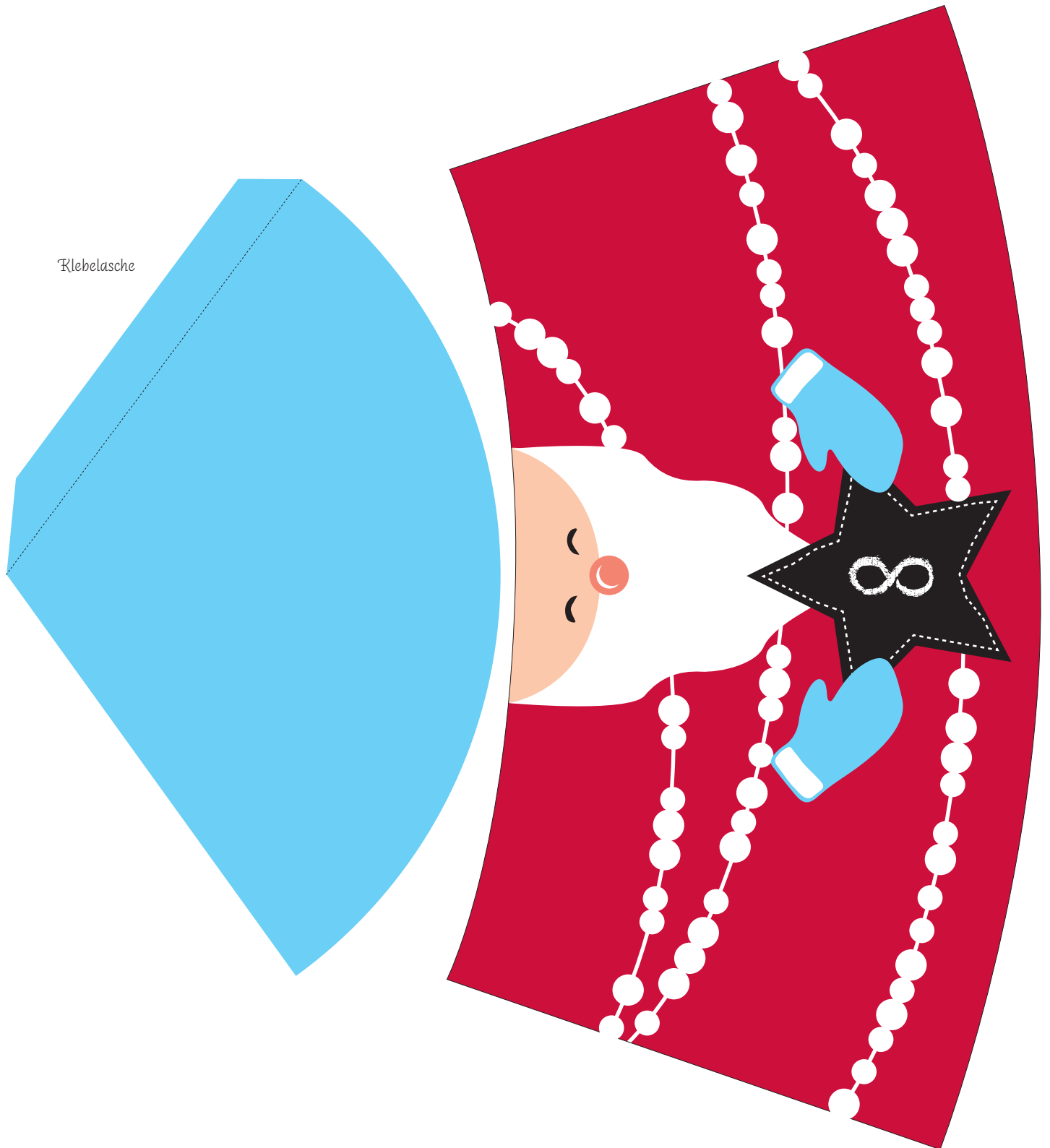




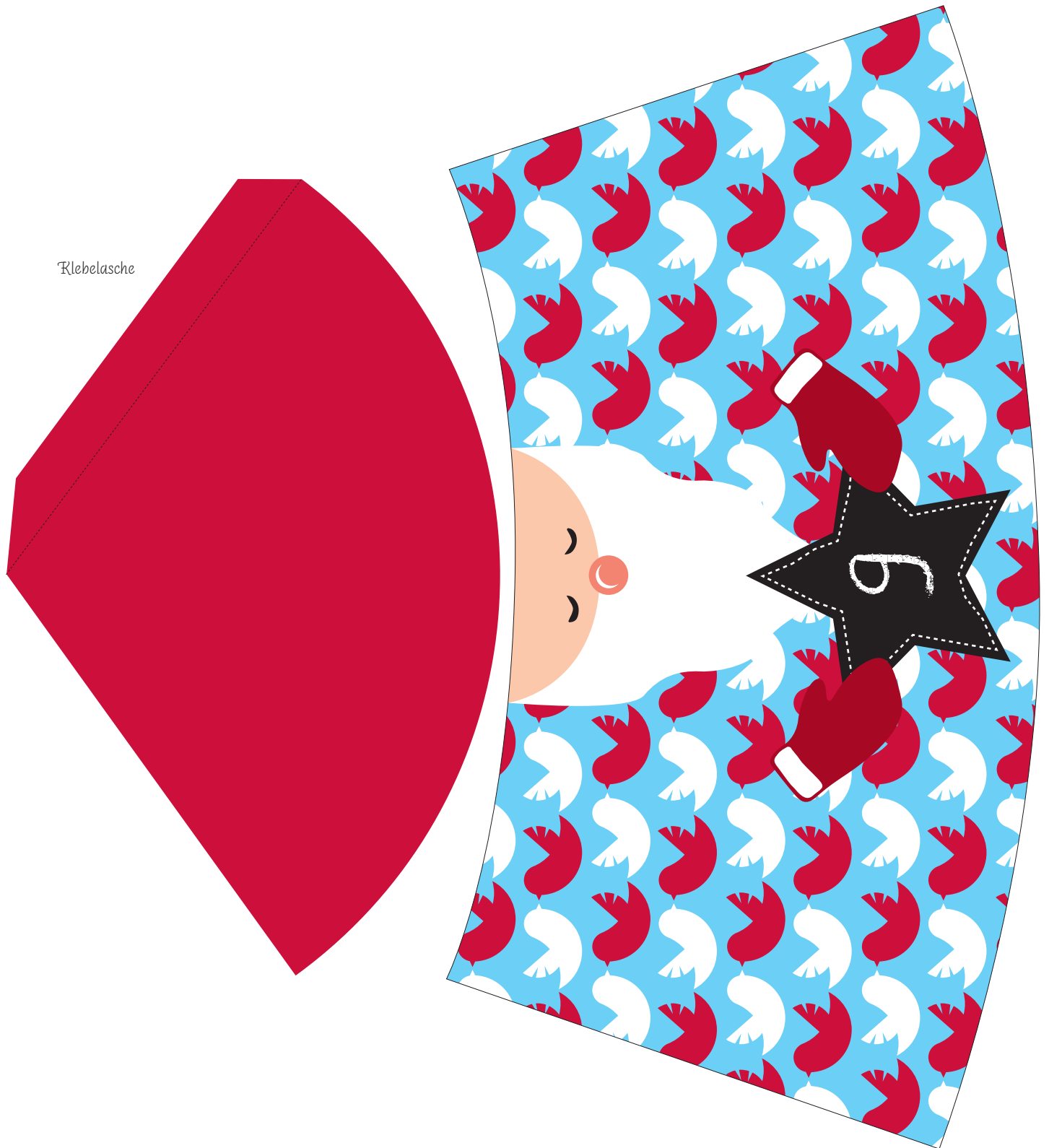


Klebelasche

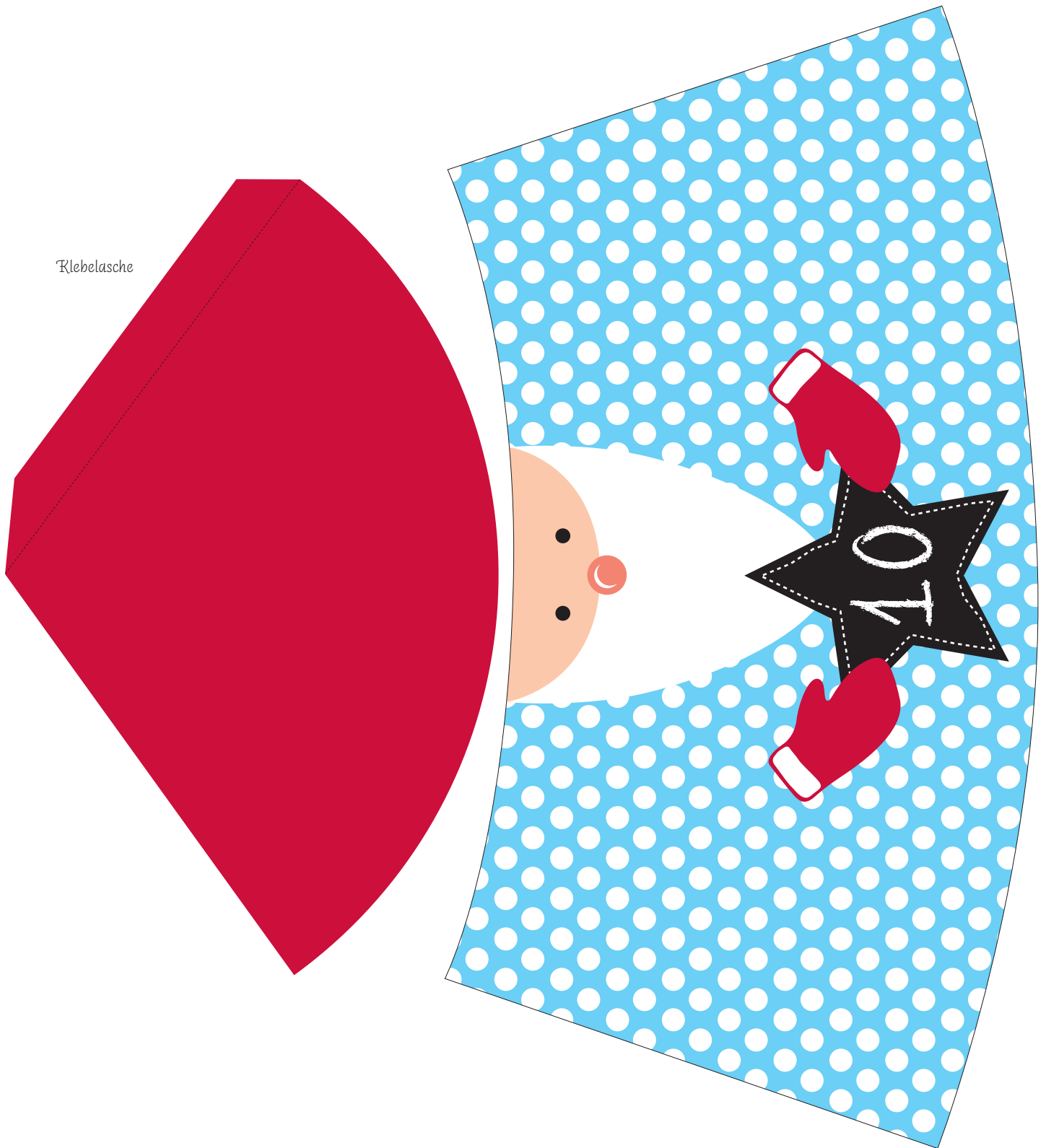


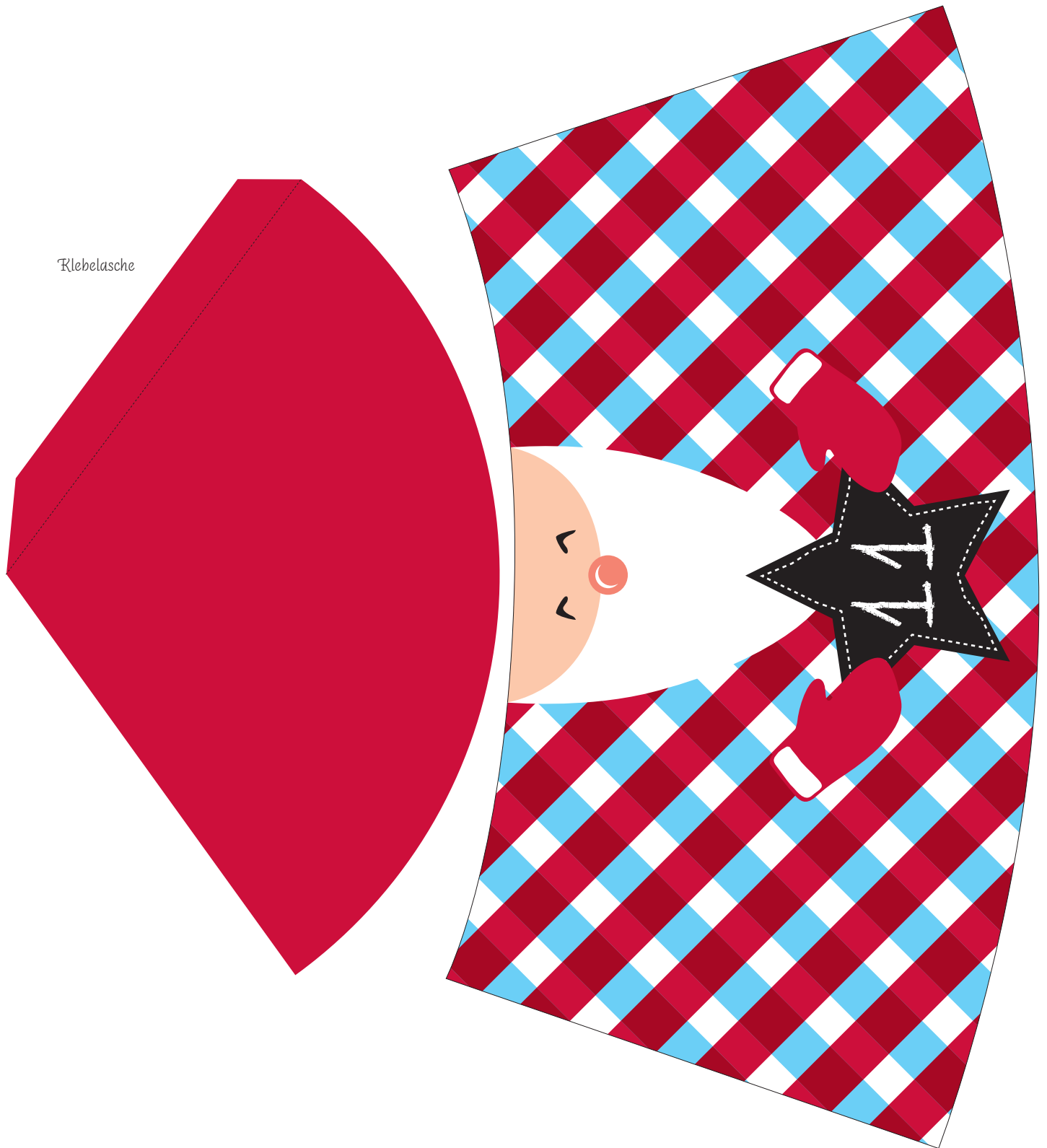


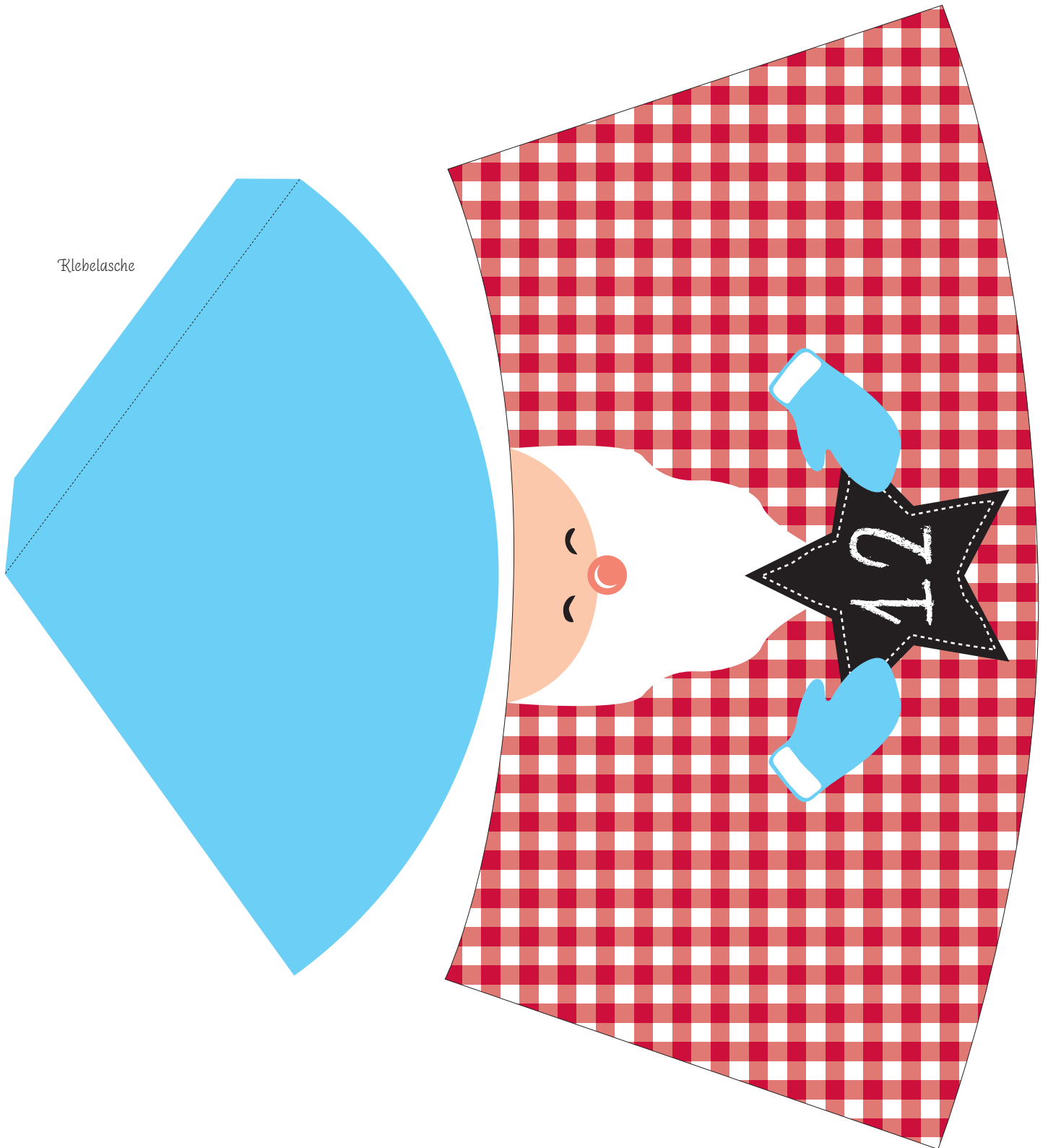
Klebelasche



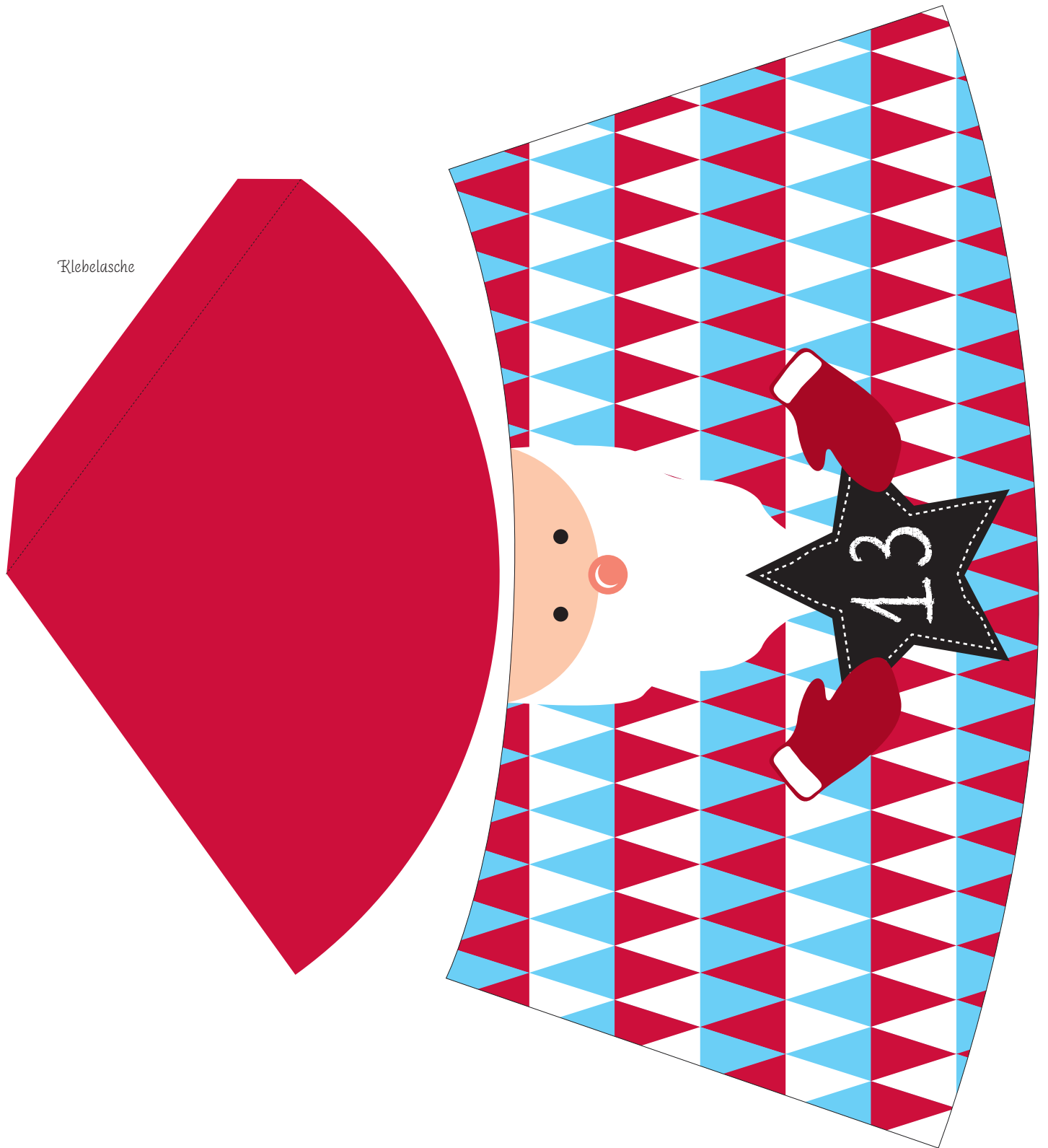
Klebelasche

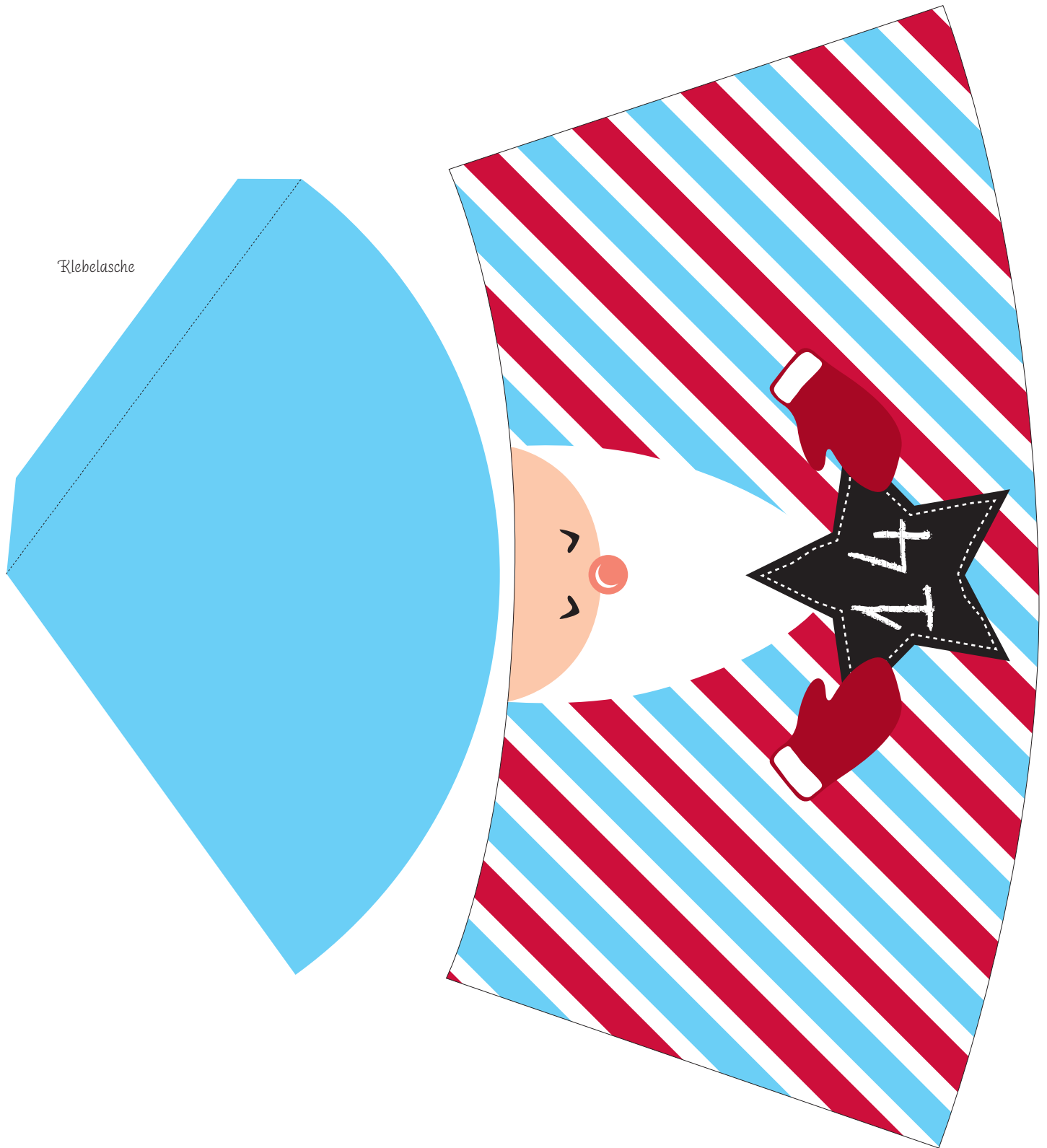


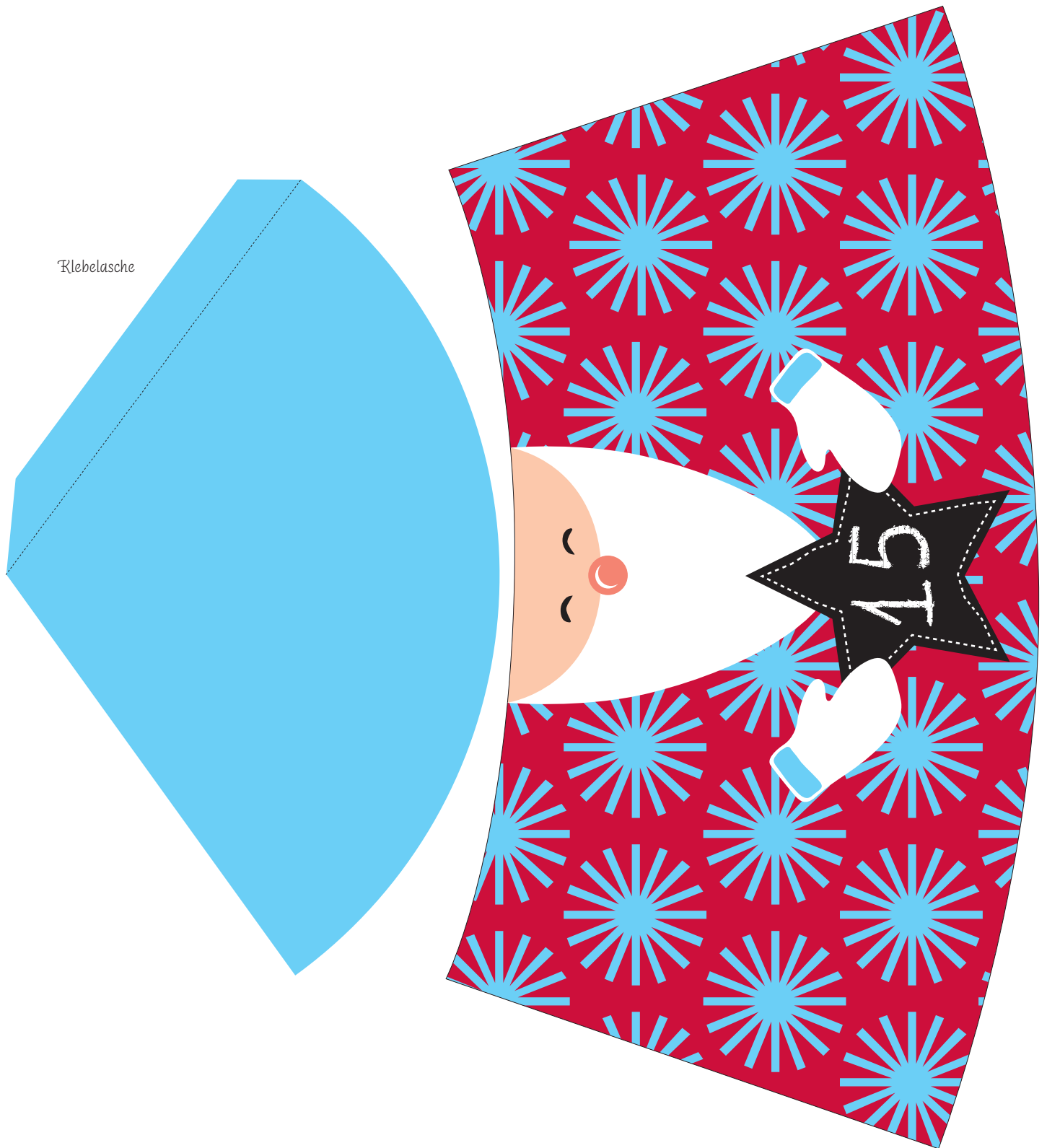




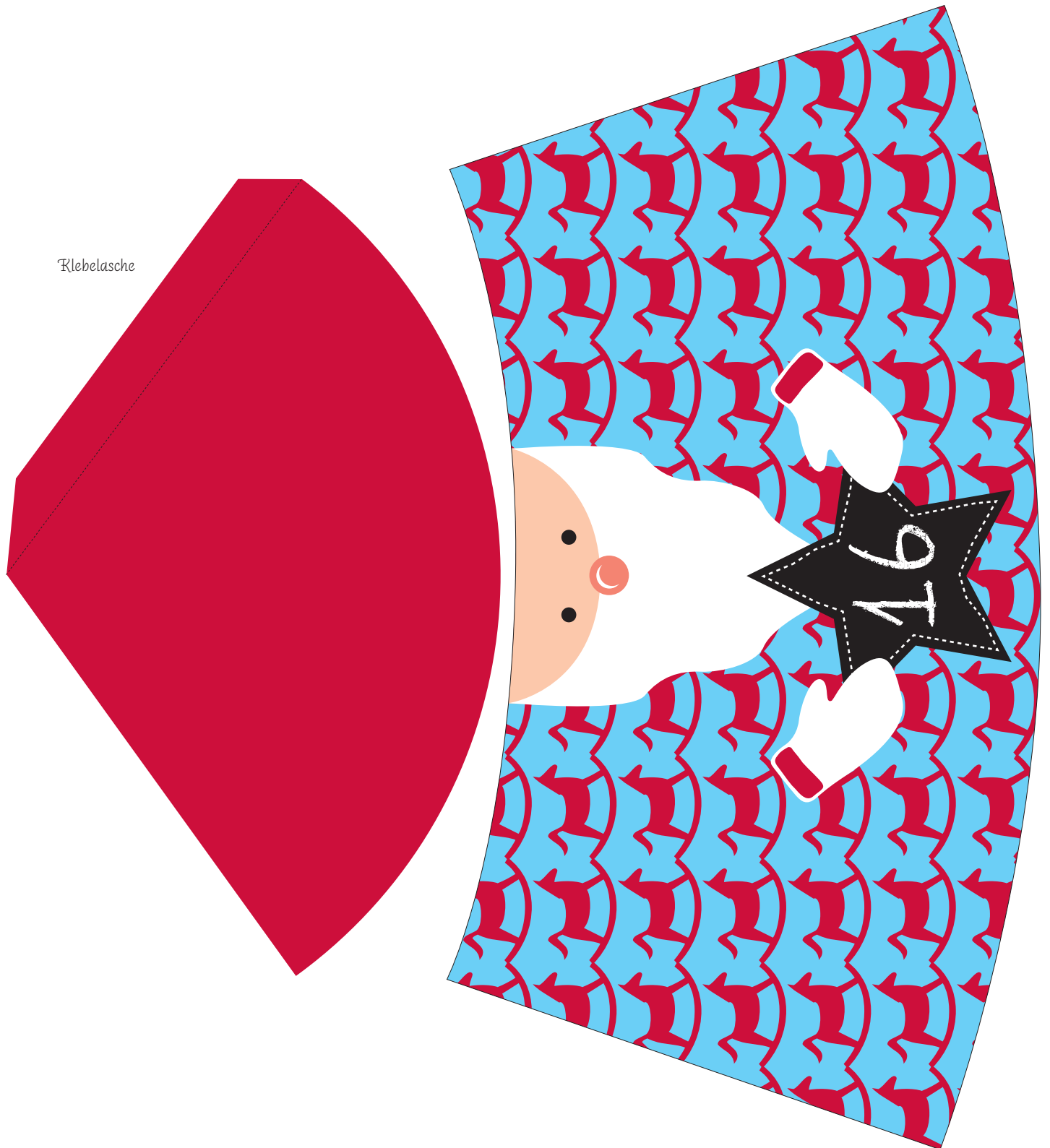
Klebelasche



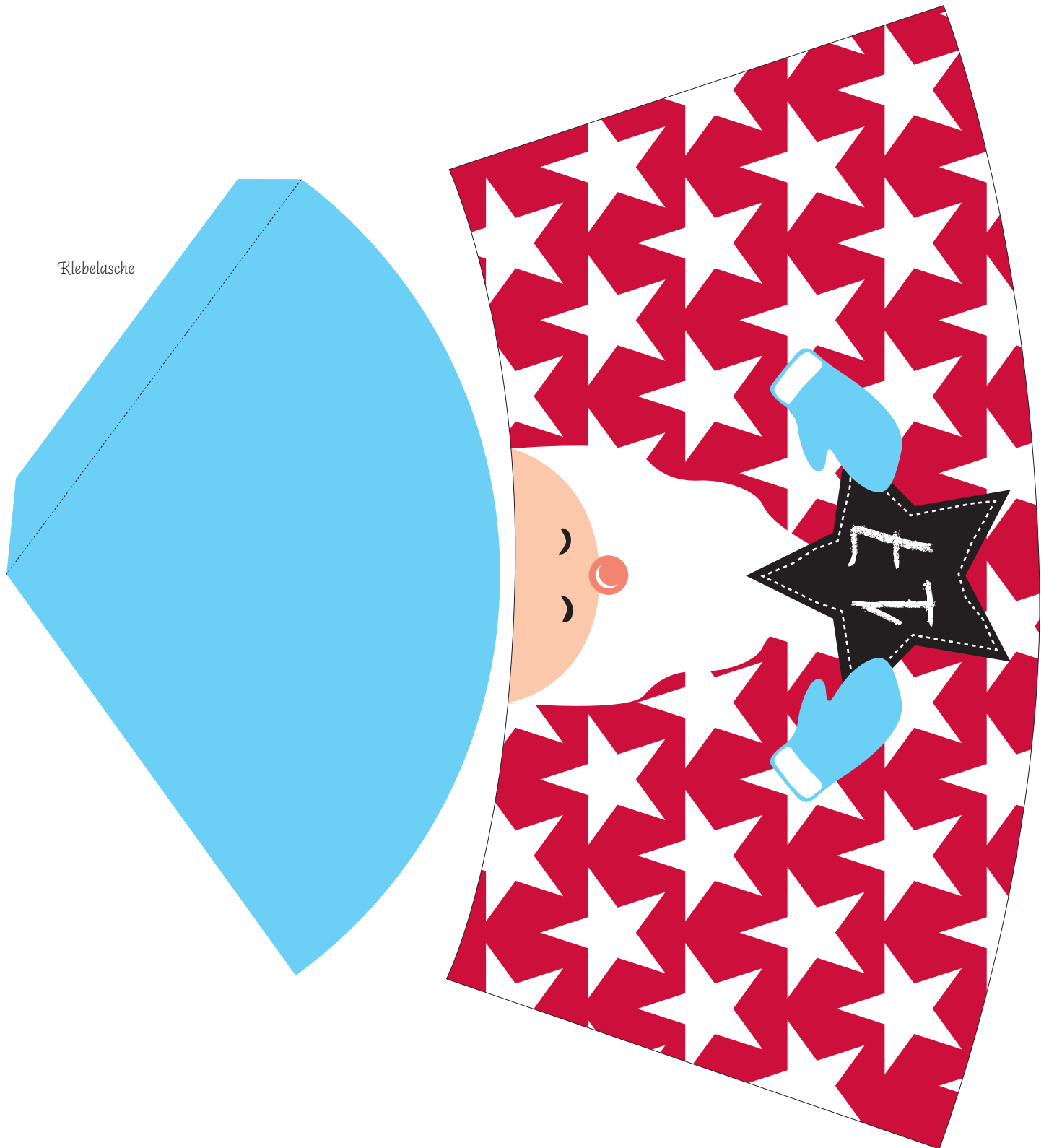


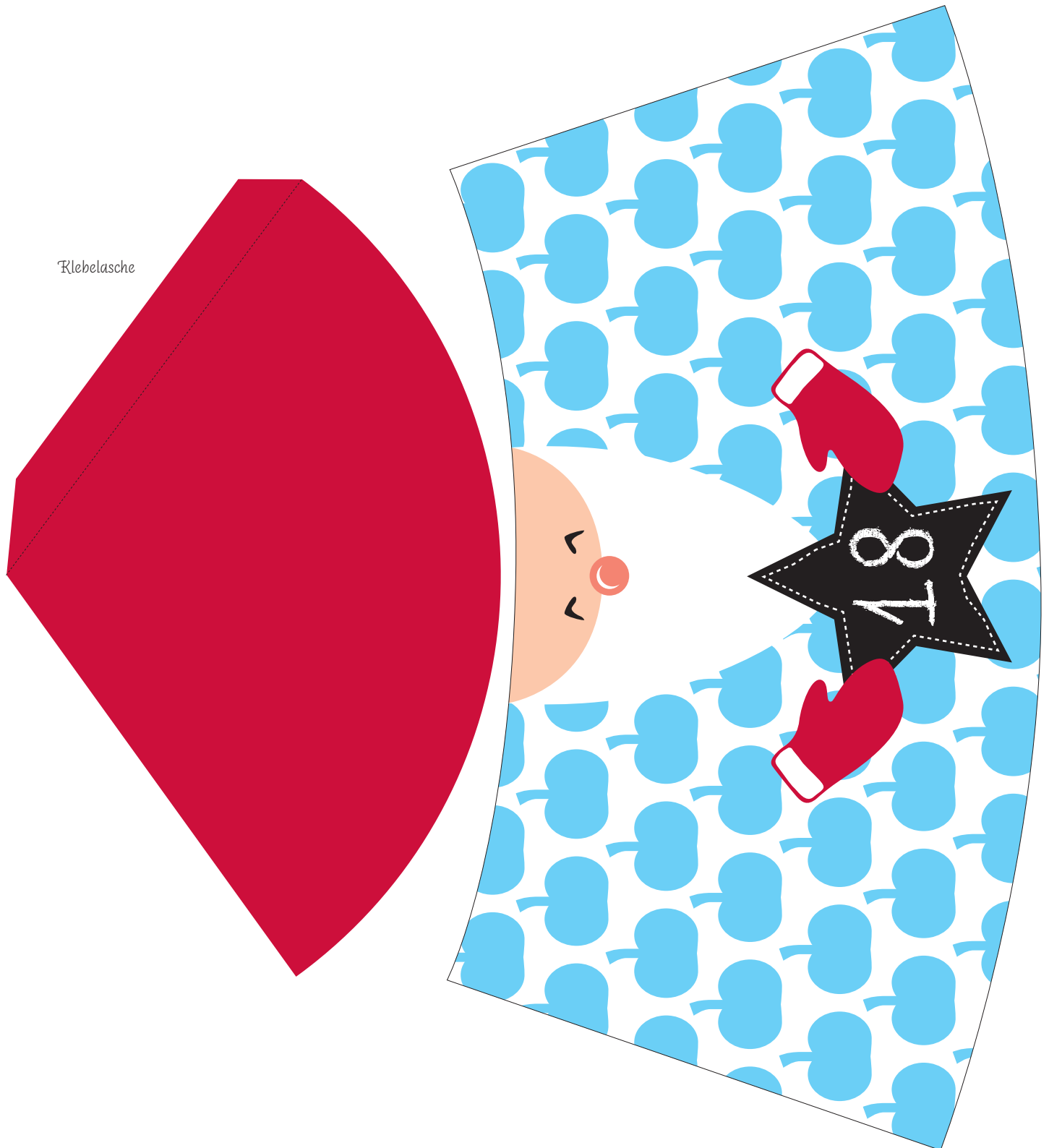


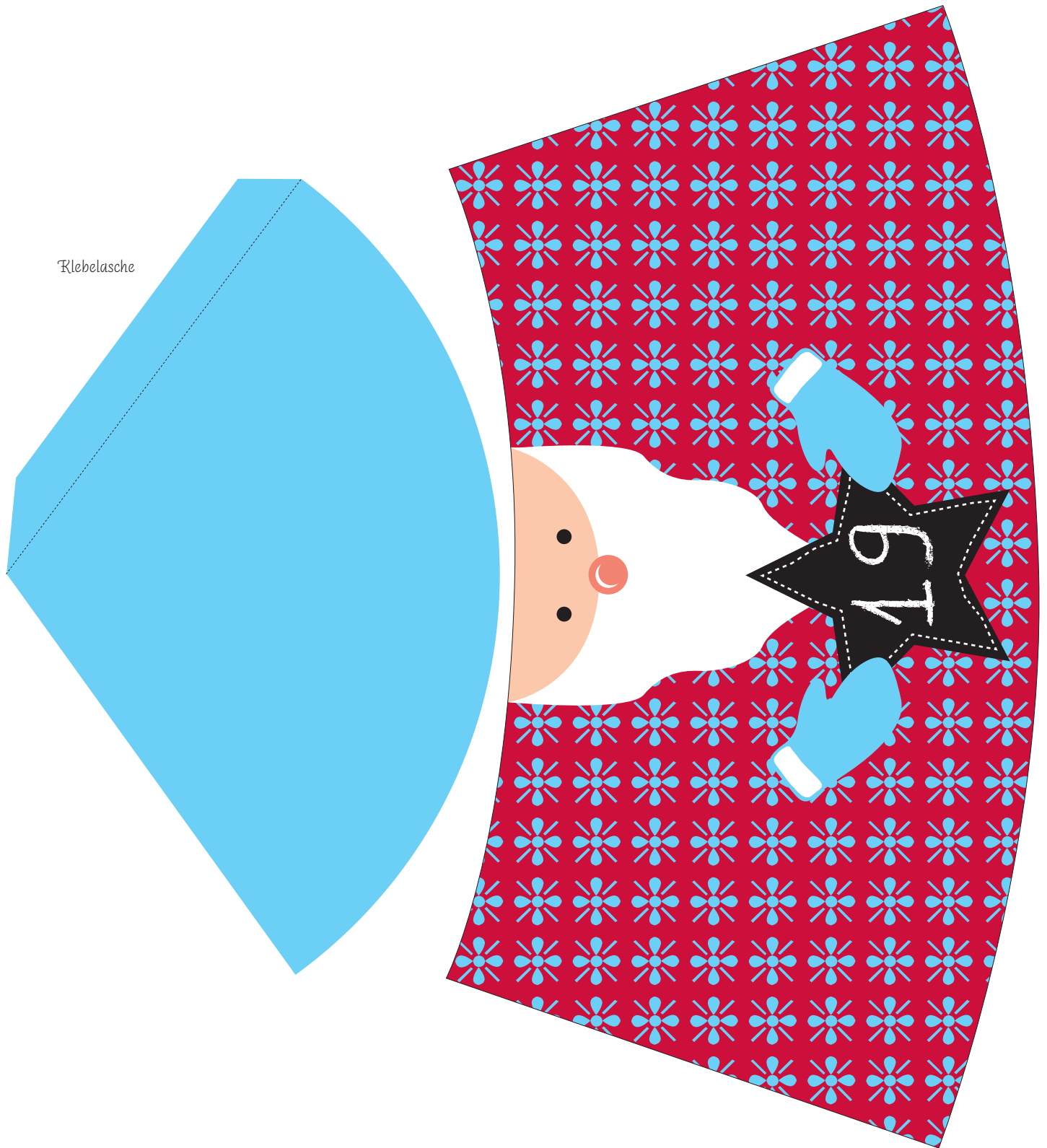
Klebelasche

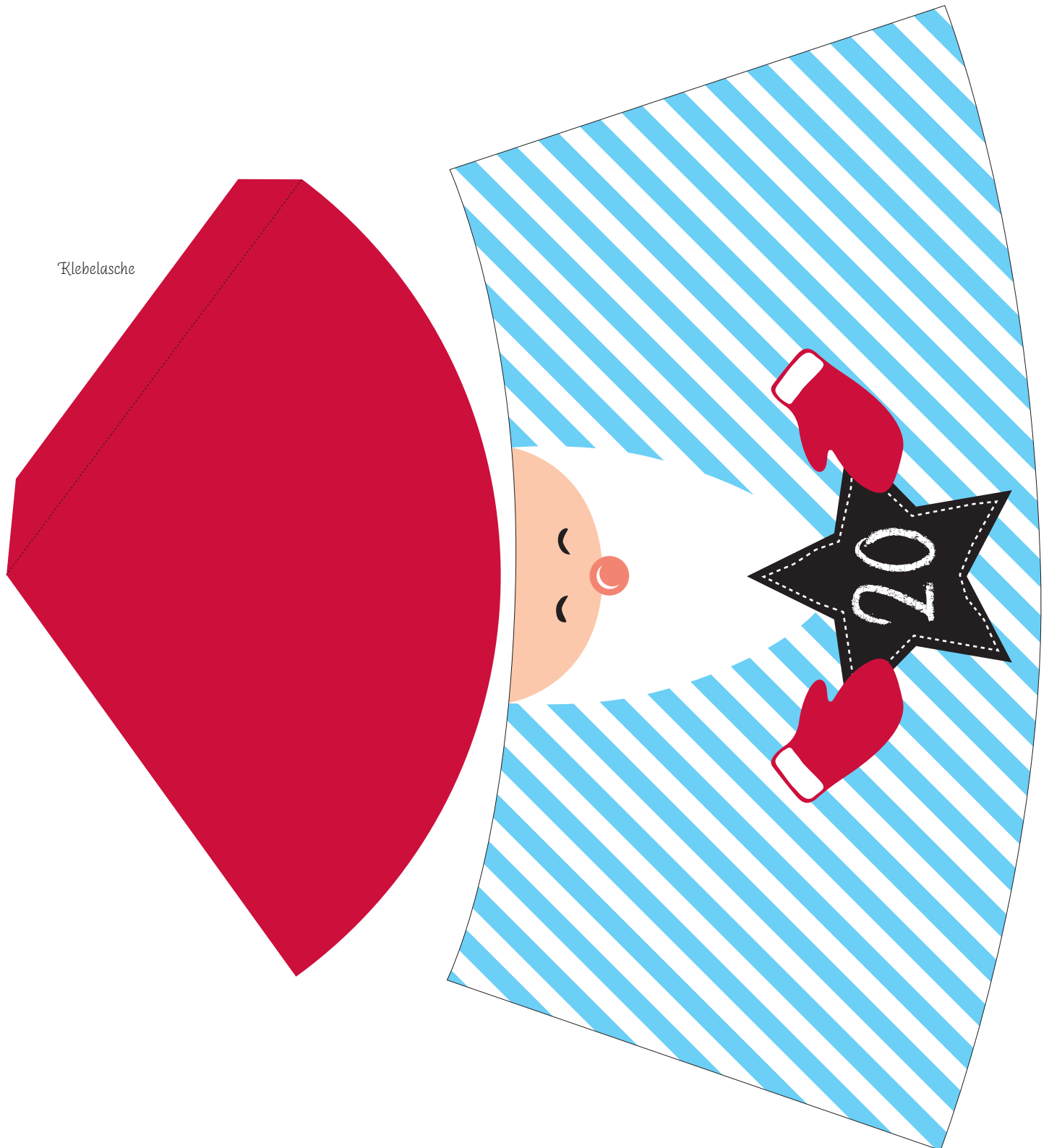


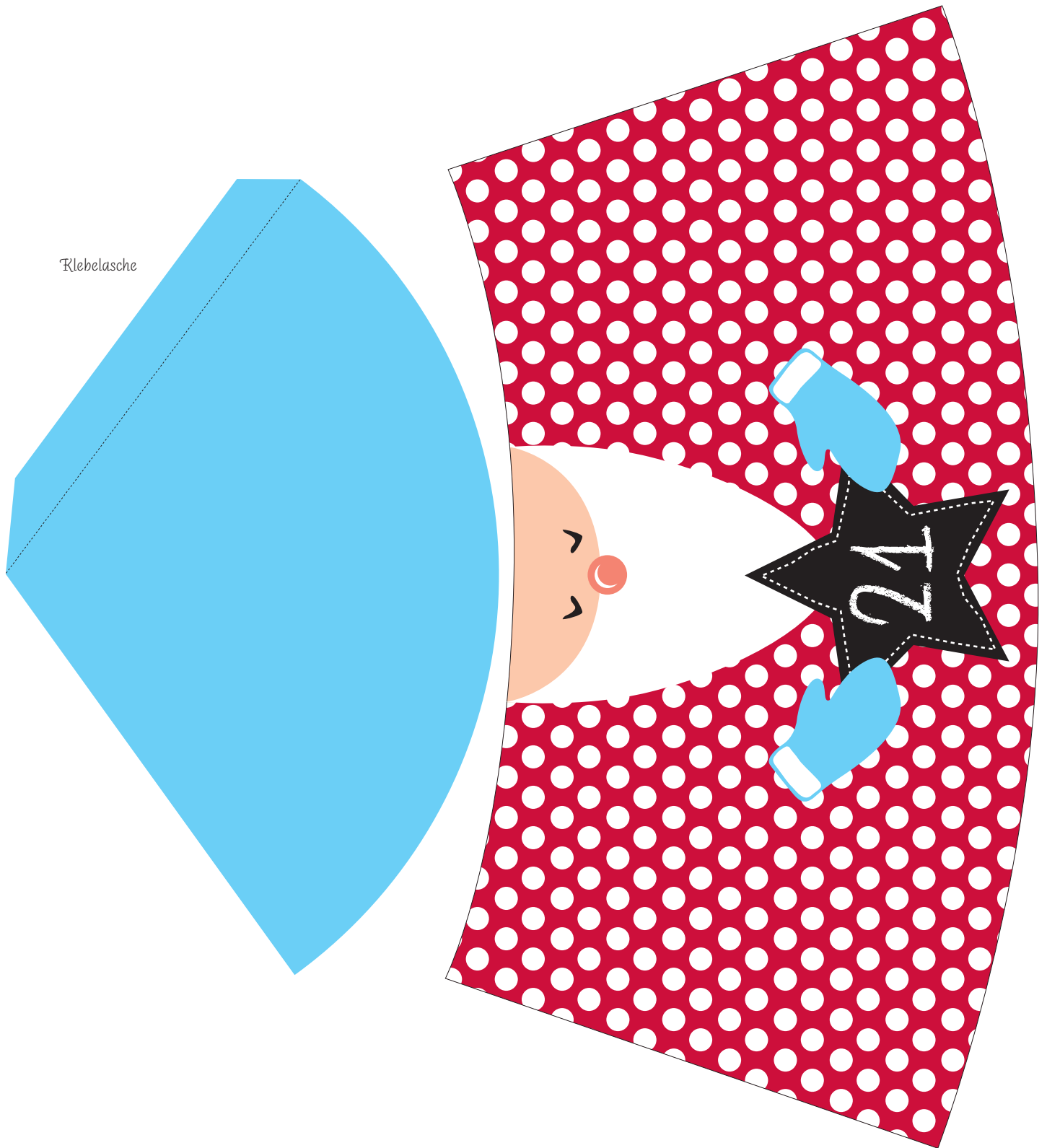
Klebelasche

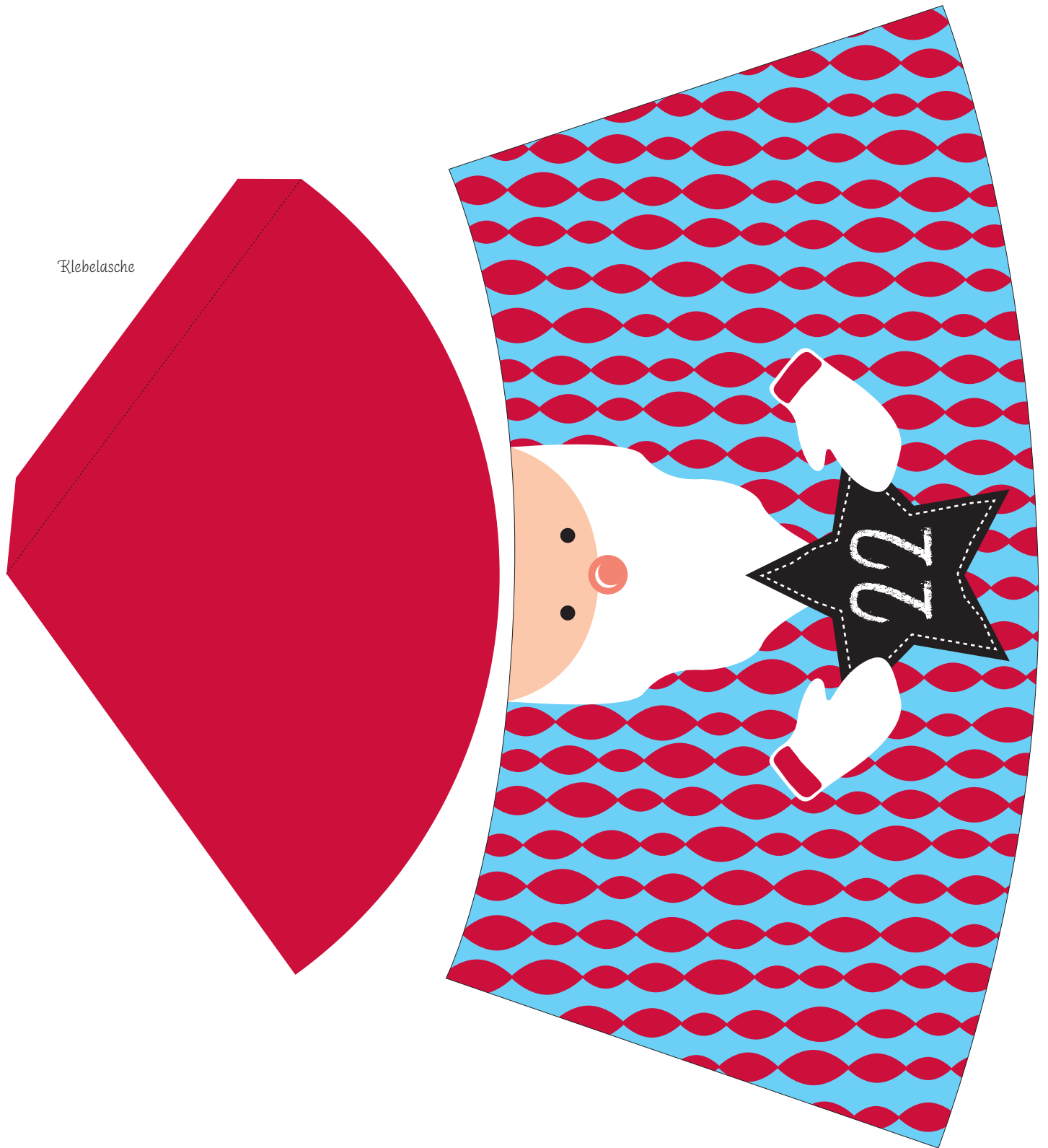




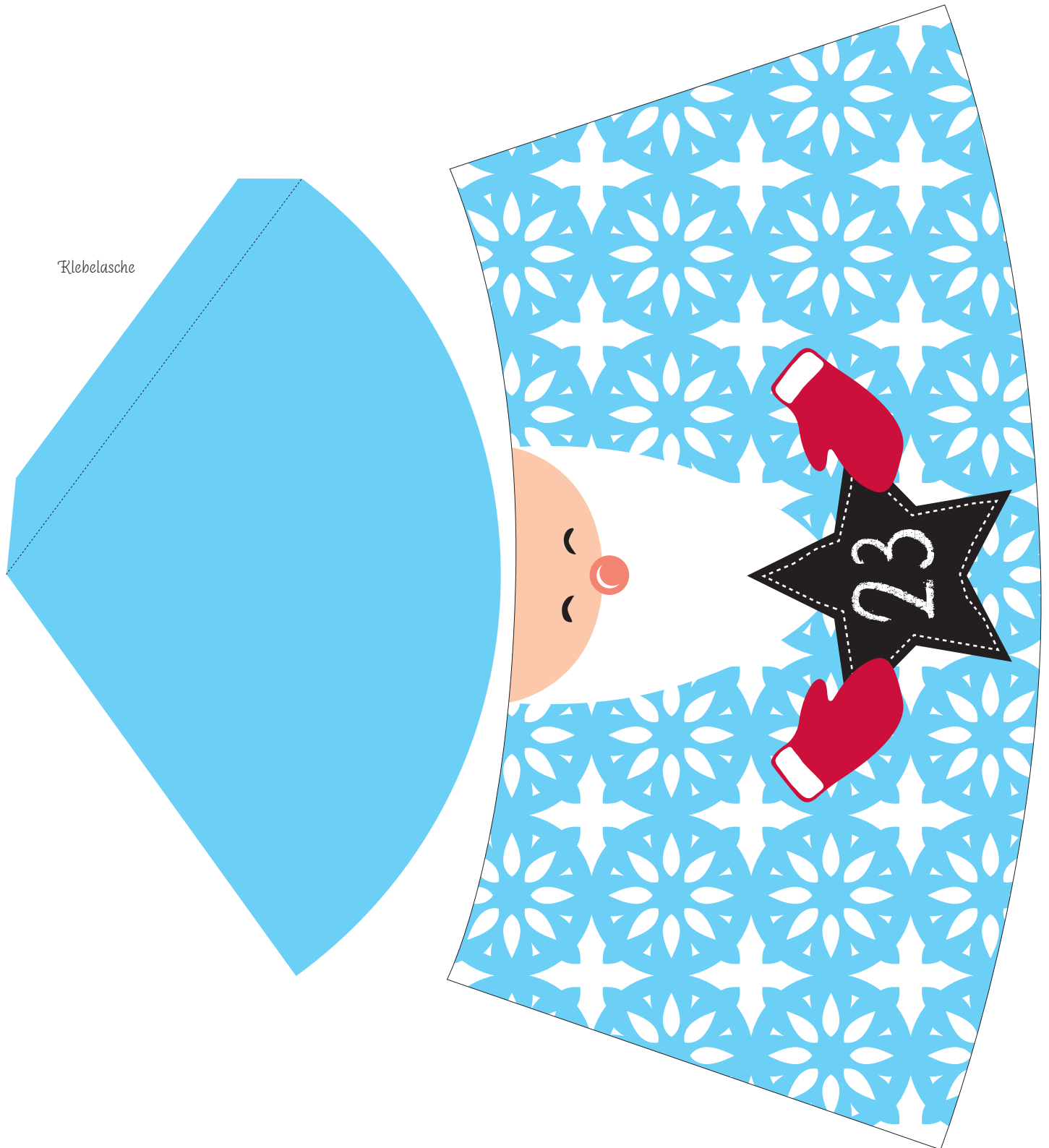








Klebelasche





Klebelasche